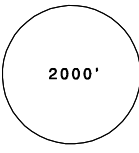
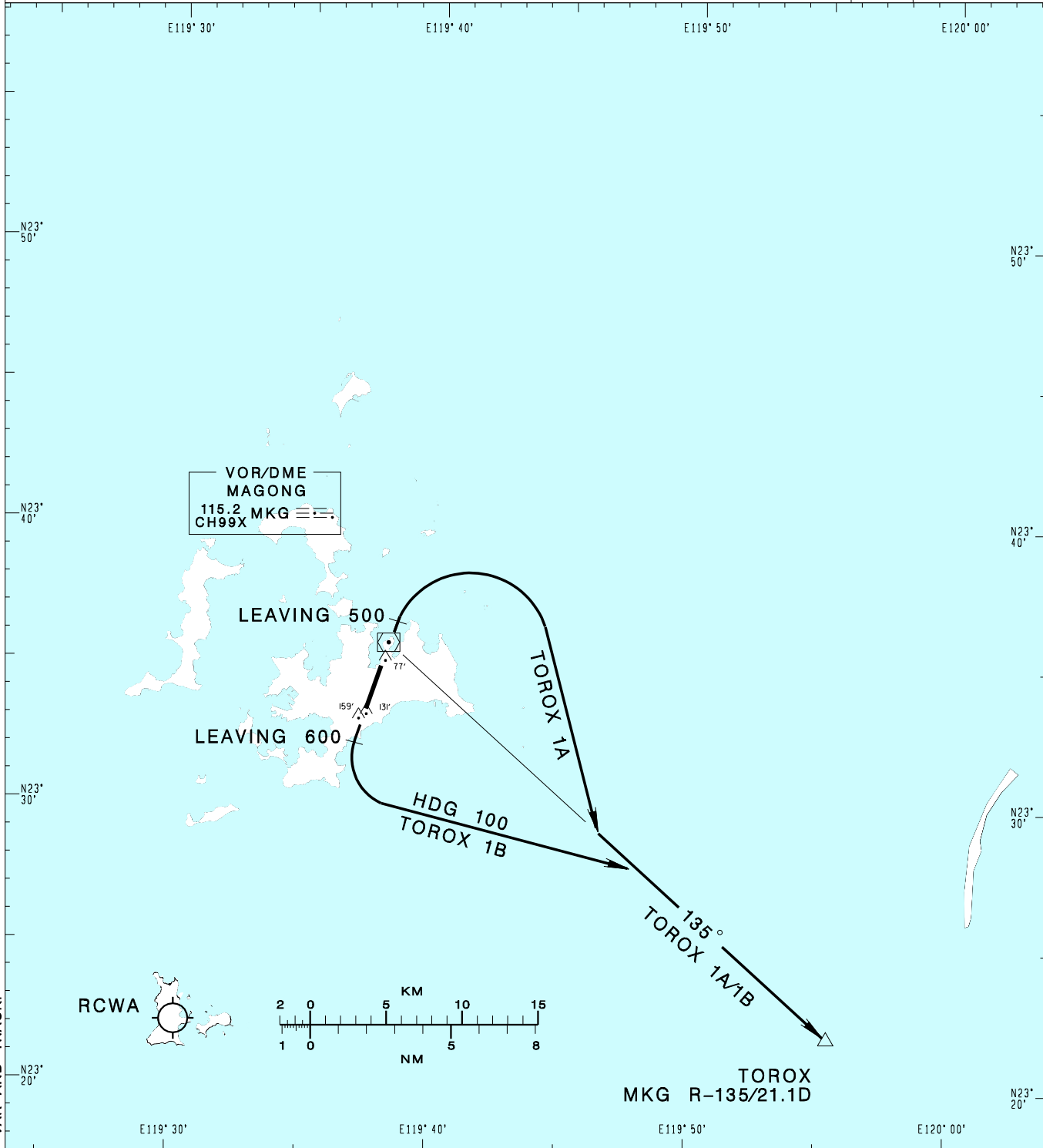


**澎湖機場**  
PENGHU AD

RCQC SID  
TOROX 1A(RWY02)  
TOROX 1B(RWY20)

KAOHSIUNG APP 128.1 234.8	MAGONG TWR 118.3 236.6	ATIS 127.05	VAR 4° -2022	
Apt Elev: 103'		Trans Level: FL130		
BEARINGS ARE MAGNETIC; DISTANCES ARE NAUTICAL MILES; ELEVATIONS, HEIGHTS IN FEET				



CHANGES: UPDATE MAG VAR AND TRACK.

**TOROX ONE ALFA DEPARTURE**  
Climb on RWY HDG until leaving 500ft, then turn right to track MKG R-135 to TOROX to join W6.

**TOROX ONE BRAVO DEPARTURE**  
Climb on RWY HDG until leaving 600ft, then turn left HDG 100 to track MKG R-135 to TOROX to join W6.

**NOTE**  
1. Caution close-in obstacles (trees, poles & water tower): 159ft MSL, 794m & 131ft MSL, 292m south of THR02; 77ft MSL, 436m north of THR20.  
2. TOROX 1B: ATS surveillance required.